

3 2



3 2

3 2



(

)

(

)

1 5

3 2

IGF





■ ■ ■ ■

35



1

(Fouling

)



(MRU)

(SRU)

TEG



MRU

(RSH > 12000 ppm)

SO₂

MRU

SRU

MRU

CO2

CO2



2

CO2

200

4 5

CO2

4 5

CO2

()

()



(

tension)

)

(Factor analysis

flare



1 MRU

MRU

1



(Heat pipe heat exchanger)

5 4

(Heat Pipe)

seal

Working Fluid



)

(

Fluent

▪)

(HTFS

SSB

()



SPGC



:1



:2
(SPGC)
SPGC

(OTS) 1



()
) (



•
•

EPC

FEED



(

)



(

)

(

)

C1-C3

-

DMC DMD

)

(SPGC



)

(

spgc



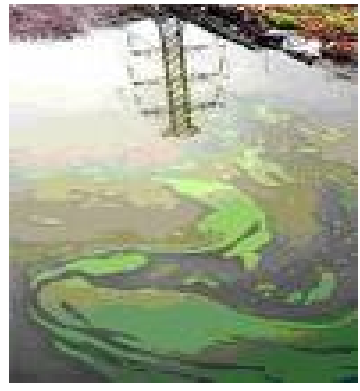
()

20



3 2

-
-



(Balanced Scorecard)
90

(
(BSC)



(Strategy Map)

:)

Re-boiler

(

)

Re-boiler

(

Re-boiler

5 4 3 2



- (1
- (2
- (3
- (4
- (5

8 7 6

512

8 7 6
56



8 7 6

CO2

:



33 KW

CG 69.2

Power:200KVA)

**VOLTAGE A.V:23 KV VOLTAGE H.V:33KV
(VECTOR GROUP:YNd11**



33kv

high impedance

H.V

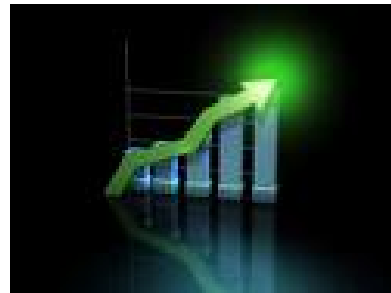
33KV

low impedance

high impedance



(Bench Marking)



ICT



.1

.2

IT

IT

IT

.3

.4

.5

.6

)

(



Resistance Temperature Detector

Thermowell

Thermowell

Thermowell

Thermowell

Thermowell

()

CO₂ H₂S

CO₂ H₂S

CO₂ H₂S ()

()

